

Holiday lettings Sydney "Waldorf South Sydney"



Flat-Apartments ground floor in a(an)
Apartment hotel

Setting : city

Capacity : 3 person(s)
Bedroom(s) : 1

Sydney - New South Wales

Australia

Advert No. 16324

Reservation : +61 (2) 96909690 (Australia)

www.ihaholidayads.com



>> HOLIDAY LETTINGS

BOOK DIRECT WITH THE OWNERS

Holiday lettings



Flat-Apartments ground floor in a(an) Apartment hotel

- **Ideal for all age groups**
- **View :** swimming pool, town, rooftop, street/avenue, nightlights
- **Setting :** city

Assets

- **Swimming pool :**
Shared swimming pool, steps in, step ladder, child secure, outside shower (open from '01 january' till '31 december')
- **Parking :**
Covered parking : 1 carport.
- **Advantages :**
Sauna, steam bath, fitness machine(s)
- **baby equipment :**
Baby chair, baby changer, baby bath, baby potty, playpen



overall view

Surroundings & location



Leisure

- **Leisure activities less than 20 km / 12 miles :**

Bathing, snorkelling, scuba diving, water skiing, jet ski, surfing, golf, tennis, squash, boat trips, mini-golf, basketball, fishing, deep-sea angling, angling

- **Supervised :**
Dive school, tennis school

Surroundings

- **Locality :**
Sea/ocean 5km
Sandy beach 7,5km
Public swimming pool 3km
Public tennis court 1,5km
18 hole golf course 2,5km
Windsurfing spots 10km
Surfing spots 7,5km
Marina 1km



king-size bed(s)



Kitchen Area



Guest facilities

Exterior

- **Outside accommodation :**
Terrace, balcony
- **Outside setting :**
Landscaped garden
- **Outside amenities :**
BBQ



fitness room

Interior

- **Receive up to :**
3 person(s) (2 adults, 1 children)
- **Liveable floor area :**
45m²
- **Interior layout :**
1 bedroom(s), 1 shower room, 1 WC, living room < 9m², sitting room, american style kitchen, dining area, tv room, fitness room, laundry room, pantry, veranda
- **Sleeps - bed(s) :**
1 king-size bed(s), 1 sofa bed(s) 1 pers, 1 baby cot(s)
- **Guest facilities :**
Lift, T.V., DVD player, film collection, t.v points, telephone, fax, cable/satelite, internet access, high speed internet access, wifi, wardrobe, cupboard, Hanging wardrobe, safe deposit box, hair dryer, fly screens, fully air conditioned, central heating, electric heating, Curtains, Blinds, entry phone system, burgular alarm, fire alarm, remote controlled gates
- **Appliances :**
Crockery/cuttlery, kitchen utensils, cafetiere, electric coffee maker, electric kettle, toaster, electric cooker, electric hobs, oven, micro-wave oven, electric chip fryer, extractor hood, refridgerator, freezer, dish washer, washing machine, clothes dryer, iron, ironing board

Services

- **Washing :**
Sheets, Towels, Linen, Blanket(s) supplement (1 X / per week +€10), Pillows
- **House :**
Cleaning (1 X / per week), Cleaning on departure, Garden/swimming pool maintenance, Caretaker/concierge, Parking
- **Personnel :**
Staff, Laundry supplement (1 X / per week + €10)
- **Restauration :**
Breakfast, Locally produced meals supplement (+€15)

For your guidance

- **For your guidance**
Children welcome
Mobile telephone network coverage, personal transport advisable
Local voltage supply : 110-120V / 60Hz
Electricity supply : mains
- **Handicapped people welcome**
Wheelchair access
Fitted out for the disabled : mobility, visually impaired, hard of hearing



Outside setting

Floor plan



Photo album - 1



overall view



Kitchen Area



king-size bed(s)



Guest facilities



Outside setting

Photo album - 2



fitness room



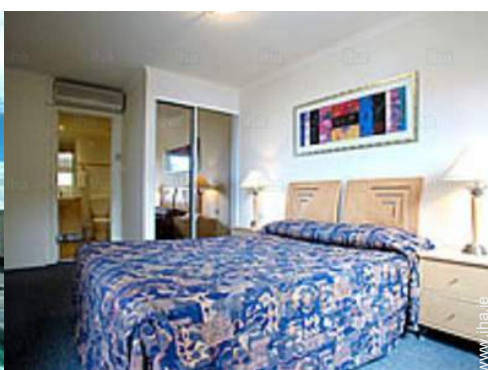
interior



breakfast



Outside amenities



bedroom



the flat



master bedroom



shared swimming pool



living room

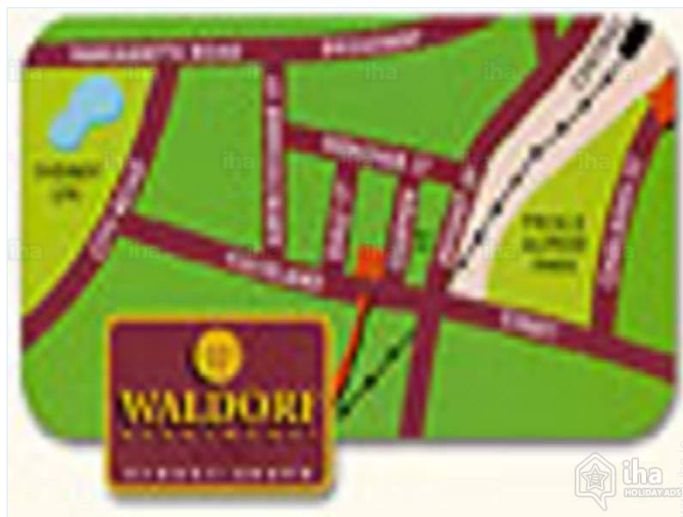


Guest facilities




lift

Route map



Location & Access

 GPS coordinates in degrees, minutes, seconds: Latitude 33° 53'19"S - Longitude 151°12'1"E (Dwelling)

Address

→ 47 Chippen Strett
1000 Sydney

• Airport Sydney Kingsford Smith

→ Sydney, New South Wales, Australia
→ Distance : 5km
→ Time : 20'

• Train station Sydney Central

→ Sydney, New South Wales, Australia
→ Distance : 1km
→ Time : 5'

• Surry Hills : (2,5km)

• Bondi : (7,5km)

Contact

Spoken languages



Location



Holiday lettings
Sydney - Australia
"Waldorf South Sydney"

9
[Book now](#)

Rental rates - Flat-Apartments - 3 Person(s)

Rates	Night	Weekend	week	2 weeks	Month
 Low season	€94*	€119*	€656*	€1194*	€2558*
 Mid season	€111*	€128*	€716*	€1279*	€2728*
 High season	€132*	€136*	€776*	€1449*	€3410*

[Book now](#)



overall view



Kitchen Area

Booking conditions

• **Reservation**

- Payment made upon reservation : 50% of rental sum
- Payment balance : 1 day before the stay

• **rentals**

- Service charges included
- Day tax included
- Cleaning charge on departure included

Accepted methods of payment

- Visa/Delta/Electron • International Money Order • Switch/Maestro • Bank transfer (wire) • MasterCard/EuroCard • Cirrus • American Express • JCB • Diners Club • PayPal • Travellers Cheques • Cash

[▶ Book now](#)

[▶ Contact the owner](#)

Contact directly the property owners

www.iha.ie
Advert No.
16324
[>> Book now <<](#)

Contact

Spoken languages



* Converted at the rate indicated : €100 = \$117.29 = £89.59

Advert No. 16324

www.iha.ie

