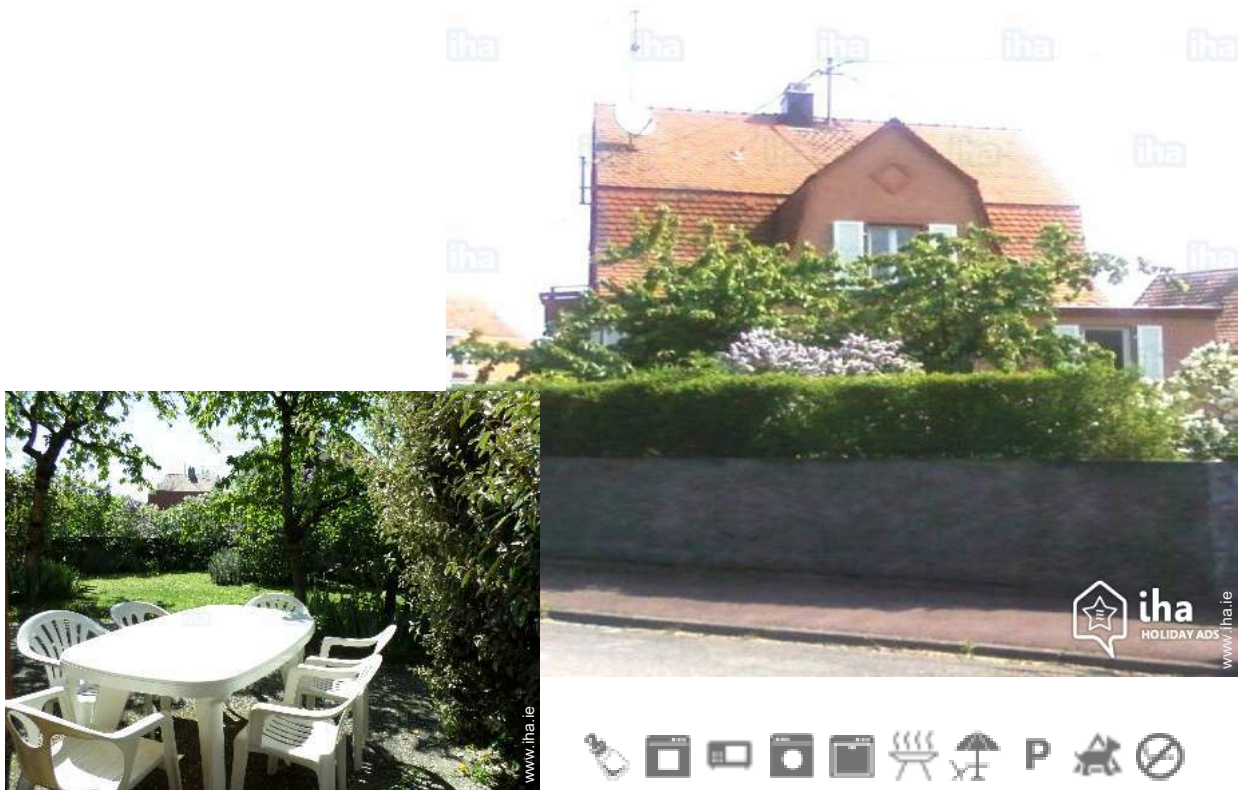


Gîte - Self Catering Florival "Gites Klink"

House with garden 50 m of a pizzeria, forest trails, of the bicycle. 15 minutes from the Museum, Park Petit Prince, Colmar, Mulhouse, vineyard, the natural park of the balloon of Vosges and Germany.



Gîte - Self Catering - Traditional accommodation, semi-detached, 1 floor, separate entrance

Setting : pleasant, bucolic

Capacity : from 2 to 7 person(s)

Bedroom(s) : 2

Room(s) : 3



Meublés de Tourisme (2 stars)

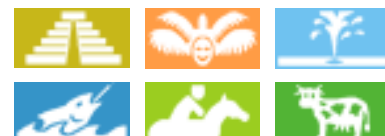
Ungersheim - Upper Rhine (68) - Alsace

France

Reservation : +33 (0) 6 17 11 15 17 (France)

Advert No. 51255

www.ihai.e



>> HOLIDAY LETTINGS

BOOK DIRECT WITH THE OWNERS

Gîte - Self Catering



Gîte - Self Catering - Traditional accommodation, semi-detached, 1 floor, separate entrance

- Ideal for all age groups, large families
- View : unobscured, garden/park
- Setting : pleasant, bucolic
- Exposure : South

"The House has a kitchen with edible table 4/8 people. 2 rooms that allow 5 single beds, a bathroom with open shower and washbasin 2 basins. The walled garden and terrace are safe from prying eyes."

Assets

- Parking :
Parking uncovered : 2 internal, 1 reserved bay.
- baby equipment :
Baby chair



garden/park view

Surroundings & location



"The Regency Museum, Park Eiblen, the Eco-Museum and the Park of the little Prince with more than 30 attractions are just 5 minutes from the lodge. In a ray of 30km you can find: West, the vineyard and the road crests with the historical site of Vieil-Armand and many farms hostels, the natural park of the ball of the Vosges for various hikes or ski resorts. To the East, route du Rhin, Neuf-Brisach heritage of UNESCO, and on the other registrant side of the Rhine the Germany. South, Mulhouse known for its Museum of the Automobile and the Cité du train, you also have the small Camargue one reserve classified with a fabulous ecosystem, a multitude of animals and a wintering of birds, which can traverse by boat, on foot or by bike. Side North, Eguisheim one village preferred by the French, several picturesque villages such as Türkheim or Kaysersberg and Colmar globally renowned for its little Venice, its architecture and its museums. While mont Saint-Odile, the monkey mountain, Haut-Koenigsbourg and the great Europapark amusement park located 50 km from the cottage."

Leisure

- Leisure activities less than 20 km / 12 miles :

Ski-trekking, ice-skating, bathing, windsurfing, sailing, canoeing, canyoning, golf, tennis, riding school, pony club, pathway, coastal/forest paths, hiking, mountain bike (path), kite flying, paragliding, flying (club), horse-drawn carriage, horse trekking, donkey rides, mini-golf, skate board (ramps), ATV/Quad Bike, go-karting, racing circuit, ten-pin bowling, fishing, angling, pétanque pitch

- Supervised :

Riding school

- Attractions and relaxation :

Bar/pub, discotheque, restaurant, cinema, open air summer cinema, karaoke, park and garden, leisure park, zoo/animal park, sea world, nature reserve, exhibition centre, art gallery, historical site, museum, theatre, summer theatre, opera house, festivals, antiques & bric-a-brac, local craftshop, cellar and wine tasting, casino, health farm, beauticians, fitness centre, Bio farm

Surroundings

- Locality :

Ski slopes 30km
Ice skating rink 20km

Heated swimming pool 200m
Sandy beach 20km
Public swimming pool 200m
Public tennis court 200m
9 hole golf course 10km
18 hole golf course 15km
Surfing spots 15km
Watersports centre 15km
River 800m
Stretch of water 1,5km
Lake 5km
Forest 50m
Mountain range 20km

- Amenities :

Village centre 1km
Town centre 2,5km
Bike/mountain bike hire 7,5km
Car rental 7,5km
Ski hire shop 15km
Breadshop 800m
Caterer 2,5km
Local shops 800m
Supermarket 1km
High class retailers 10km
Hairdressing salon 1km
Internet cafe 7,5km
Post office 800m
Bank 800m
Cash point 1km
Chemist 1km
Doctor 1km
Nurse 1km
Hospital 1km



garden



view from the house



separate kitchen

Interior

- **Receive up to :**
from 2 to 7 person(s) (6 adults, 1 children)
- **Liveable floor area :**
80m²
- **Interior layout :**
3 Room(s), 2 bedroom(s), 1 shower room, 2 WC, sitting room 14m², separate kitchen
- **Sleeps - bed(s) :**
1 double bed(s), 1 sofa bed(s) 2 pers, 4 single bed(s), 2 bunk beds, 2 twin beds (standard), 1 possible extra bed(s)
- **Guest facilities :**
T.V., t.v points, wardrobe, cupboard, Hanging wardrobe, hair dryer, mobile cool air fan, central heating, Double glazed
- **Appliances :**
Crockery/cutlery, kitchen utensils, cafetiere, electric coffee maker, electric kettle, toaster, electric raclette set, fondue set, gas cooker, electric hobs, mini-oven, micro-wave oven, extractor hood, refridgerator, freezer, dish washer, washing machine, vacuum cleaner, iron

Exterior

- **Ground surface :**
300m²
- **Outside accommodation :**
Terrace 4m²
- **Outside setting :**
Private courtyard, enclosed grounds, garden 300m²
- **Outside amenities :**
Summer living area, BBQ, garden table(s), 8 garden seat(s), garden seated area



twin beds (standard)

Services

- **Washing :**
Sheets (1 X / per week), Quilt(s), Pillows
- **House :**
Cleaning on departure supplement (+€40), Parking

For your guidance

- **For your guidance**
Children welcome
Pets accepted under certain conditions (ask the owner)
Non smoking rental, mobile telephone network coverage, personal transport advisable
Water : hot/cold
Local voltage supply : 110-120V / 60Hz



bedroom

Photo album - 1



garden/park view



view from the house



garden



separate kitchen



bedroom

Photo album - 2



twin beds (standard)



Interior layout



shower room



Guest facilities



Surroundings



mountain bike (path)



horse trekking



Attractions and relaxation



museum

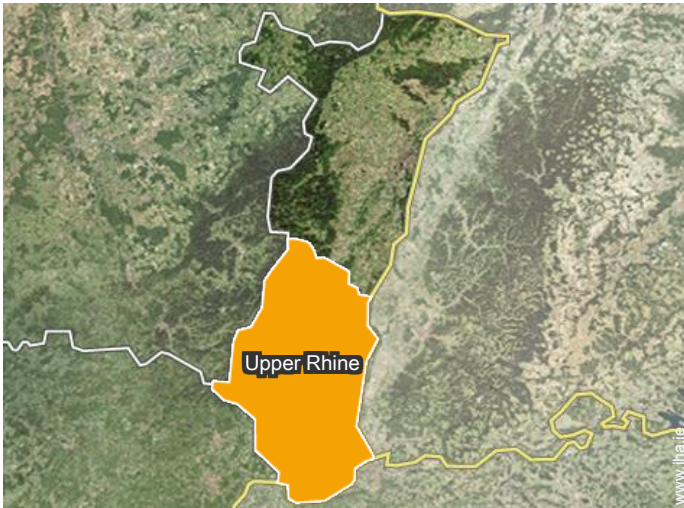


park and garden



river

Location



Location & Access

" 15 km A36 exit Burnhaupt, 4km A6 exit Ecomuseum/Park little Prince, 3km exit Bollwiller or Raedersheim RN83. "



GPS coordinates in degrees, minutes, seconds: Latitude 47°52'27"N - Longitude 7°19'29"E ([Dwelling](#))

Address

→ 34 Rue première armée française
68190 Ungersheim

• Basel : (45km)

• Motorway (junction) A35

→ Ensisheim, Upper Rhine, Alsace, France
→ Distance : 5km
→ Time : 5'

• Airport Basel/Mulhouse/Freiburg

→ Mulhouse, Upper Rhine, Alsace, France
→ Distance : 40km
→ Time : 40'

• Ensisheim : (5km)

• Colmar : (30km)

Contact

Spoken languages



Gîte - Self Catering
 Alsace - France
"Gites Klink"

[Book now](#)

Availability calendar - from : january 2019

Jan	Tu	W	Th	F	Sa	Su	M	Tu	W	Th	F	Sa	Su	M	Tu	W	Th	F	Sa	Su	M	Tu	W	Th							
2019	1	2	3	4	5	6	7	8	9	10	11	12	13	14	15	16	17	18	19	20	21	22	23	24	25	26	27	28	29	30	31
																					-	-	-	-	-	-	-	-	-	-	

Feb	F	Sa	Su	M	Tu	W	Th	F	Sa	Su	M	Tu	W	Th	F	Sa	Su	M	Tu	W	Th								
2019	1	2	3	4	5	6	7	8	9	10	11	12	13	14	15	16	17	18	19	20	21	22	23	24	25	26	27	28	
	-	-	-	-	-	-	-	-	-	-	-	-	-	-	-	-	-	-	-	-	-	-	-	-	-	-	-	-	-

Mar	F	Sa	Su	M	Tu	W	Th	F	Sa	Su	M	Tu	W	Th	F	Sa	Su	M	Tu	W	Th	F	Sa	Su							
2019	1	2	3	4	5	6	7	8	9	10	11	12	13	14	15	16	17	18	19	20	21	22	23	24	25	26	27	28	29	30	31
	-	-	-	-	-	-	-	-	-	-	-	-	-	-	-	-	-	-	-	-	-	-	-	-	-	-	-	-	-	-	

Apr	M	Tu	W	Th	F	Sa	Su	M	Tu	W	Th	F	Sa	Su	M	Tu	W	Th	F	Sa	Su	M	Tu							
2019	1	2	3	4	5	6	7	8	9	10	11	12	13	14	15	16	17	18	19	20	21	22	23	24	25	26	27	28	29	30
	-	-	-	-	-	-	-	-	-	-	-	-	-	-	-	-	-	-	-	-	-	-	-	-	-	-	-	-	-	-

May	W	Th	F	Sa	Su	M	Tu	W	Th	F	Sa	Su	M	Tu	W	Th	F	Sa	Su	M	Tu	W	Th	F							
2019	1	2	3	4	5	6	7	8	9	10	11	12	13	14	15	16	17	18	19	20	21	22	23	24	25	26	27	28	29	30	31
	-	-	-	-	-	-	-	-	-	-	-	-	-	-	-	-	-	-	-	-	-	-	-	-	-	-	-	-	-	-	

June	Sa	Su	M	Tu	W	Th	F	Sa	Su	M	Tu	W	Th	F	Sa	Su	M	Tu	W	Th	F	Sa	Su							
2019	1	2	3	4	5	6	7	8	9	10	11	12	13	14	15	16	17	18	19	20	21	22	23	24	25	26	27	28	29	30
	-	-	-	-	-	-	-	-	-	-	-	-	-	-	-	-	-	-	-	-	-	-	-	-	-	-	-	-	-	-

Jul	M	Tu	W	Th	F	Sa	Su	M	Tu	W	Th	F	Sa	Su	M	Tu	W	Th	F	Sa	Su	M	Tu	W							
2019	1	2	3	4	5	6	7	8	9	10	11	12	13	14	15	16	17	18	19	20	21	22	23	24	25	26	27	28	29	30	31
	-	-	-	-	-	-	-	-	-	-	-	-	-	-	-	-	-	-	-	-	-	-	-	-	-	-	-	-	-	-	

Aug	Th	F	Sa	Su	M	Tu	W	Th	F	Sa	Su	M	Tu	W	Th	F	Sa	Su	M	Tu	W	Th	F	Sa							
2019	1	2	3	4	5	6	7	8	9	10	11	12	13	14	15	16	17	18	19	20	21	22	23	24	25	26	27	28	29	30	31
	-	-	-	-	-	-	-	-	-	-	-	-	-	-	-	-	-	-	-	-	-	-	-	-	-	-	-	-	-	-	

Sep	Su	M	Tu	W	Th	F	Sa	Su	M	Tu	W	Th	F	Sa	Su	M	Tu	W	Th	F	Sa	Su	M							
2019	1	2	3	4	5	6	7	8	9	10	11	12	13	14	15	16	17	18	19	20	21	22	23	24	25	26	27	28	29	30
	-	-	-	-	-	-	-	-	-	-	-	-	-	-	-	-	-	-	-	-	-	-	-	-	-	-	-	-	-	-

Oct	Tu	W	Th	F	Sa	Su	M	Tu	W	Th	F	Sa	Su	M	Tu	W	Th	F	Sa	Su	M	Tu	W	Th							
2019	1	2	3	4	5	6	7	8	9	10	11	12	13	14	15	16	17	18	19	20	21	22	23	24	25	26	27	28	29	30	31
	-	-	-	-	-	-	-	-	-	-	-	-	-	-	-	-	-	-	-	-	-	-	-	-	-	-	-	-	-	-	

 Reserved



Availability calendar - from : october 2019

Nov	F	Sa	Su	M	Tu	W	Th	F	Sa	Su	M	Tu	W	Th	F	Sa	Su	M	Tu	W	Th	F	Sa							
2019	1	2	3	4	5	6	7	8	9	10	11	12	13	14	15	16	17	18	19	20	21	22	23	24	25	26	27	28	29	30
	-	-	-	-	-	-	-	-	-	-	-	-	-	-	-	-	-	-	-	-	-	-	-	-	-	-	-	-	-	

Dec	Su	M	Tu	W	Th	F	Sa	Su	M	Tu	W	Th	F	Sa	Su	M	Tu	W	Th	F	Sa	Su	M	Tu							
2019	1	2	3	4	5	6	7	8	9	10	11	12	13	14	15	16	17	18	19	20	21	22	23	24	25	26	27	28	29	30	31
	-	-	-	-	-	-	-	-	-	-	-	-	-	-	-	-	-	-	-	-	-	-	-	-	-	-	-	-	-	-	

 Reserved

[Month : Next >>](#)

Rental rates - Gîte - Self Catering - Traditional accommodation - from 2 to 7 Person(s)

Rates	Night	Weekend	week	2 weeks	Month
 Low season	€170	€280	€470	-	-
 Mid season	€170	€280	€490	-	-
 High season	€170	€290	€630 (Saturday)	-	-

(Check-in day)

[Book now](#)

Booking conditions

• Reservation

- Payment made upon reservation : 45% of rental sum
- Payment balance : 2 weeks before the stay
- Deposit required : €600

• rentals

- Service charges included
- Day tax in addition
- Anticipated supplement for :
 - animals
 - supplementary bed(s)

Accepted methods of payment

- Visa/Delta/Electron • Bank transfer (wire) • Cheque • Cash • Holiday voucher

[▶ Book now](#)

[▶ Contact the owner](#)

Contact directly the property owners

www.iha.ie
Advert No.
51255
[>> Book now <<](#)

Contact

Spoken languages

